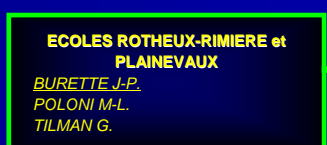
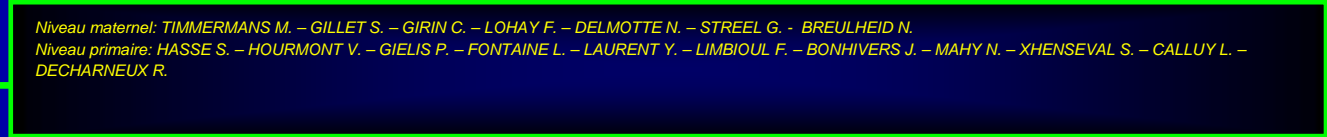
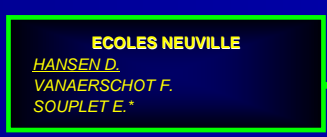
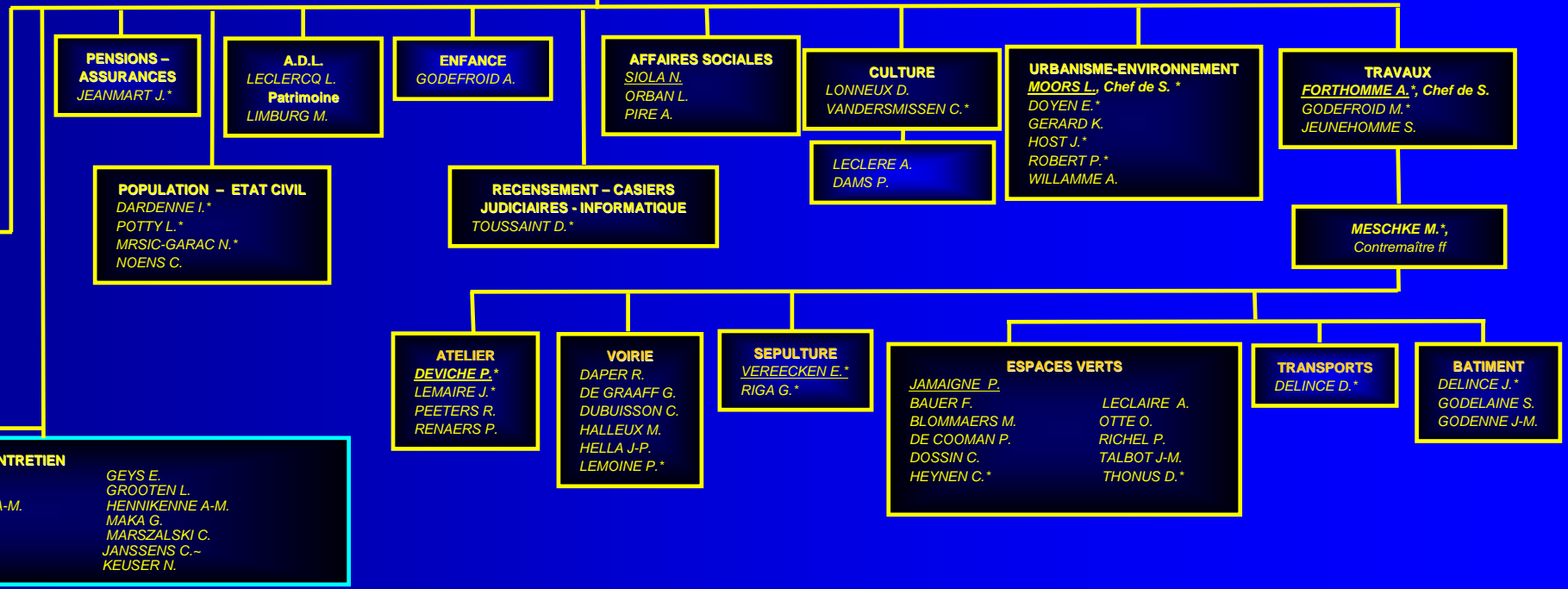
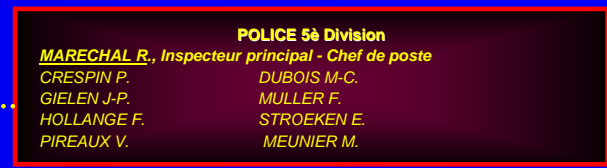


# Mandataires politiques



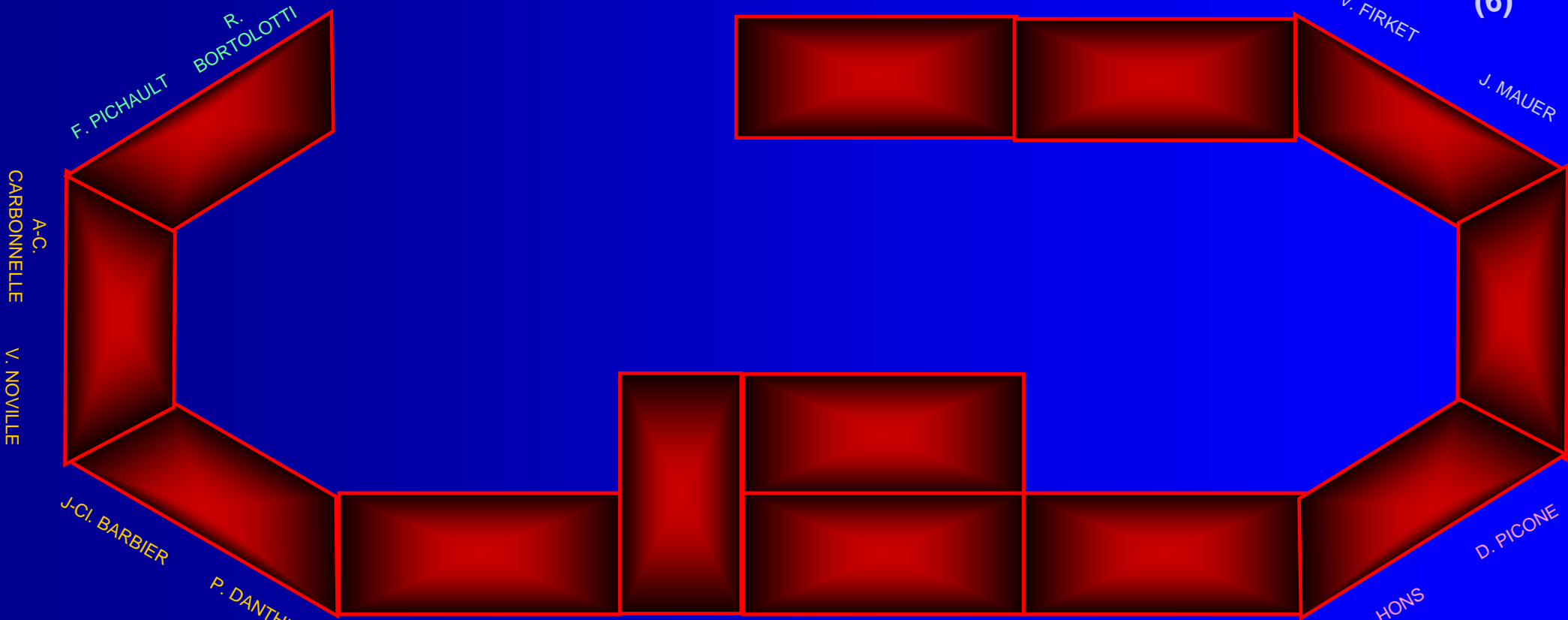
(\*): personnel statutaire  
 (~): trait. extra communal

# Conseil communal (21+1)

**ECOLO**  
(2)

**M.R.**  
(6)

Ch-A.  
VERSCHUEREN S. CAPRASSE C. JADOT M. ROUFFART



A.-C.  
CARBONNELLE  
V. NOVILLE

A.-G.  
KRUPA  
M.  
LAMMERETZ

J.-C. BARBIER  
P. DANTHINE

B. HONS  
D. PICONE

Fr.  
CRUNEMBERG 3è Echevin  
J.-P. ETIENNE, J.-P. D'INVERNO, Pst CPAS 1er Ech.  
X.-Y. CLEMENT, Secrétaire communal  
A. CORTIS, Bourgmestre  
D. CUYPERS, 4è Ech. V. LAPLANCHE, 2è Ech.

**C.D.H.-I.C.**  
(6+1)

*Collège communal*

**P.S.**  
(7)