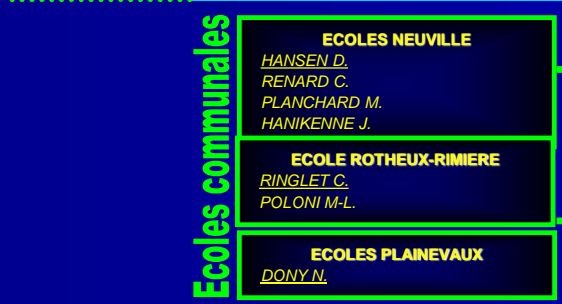
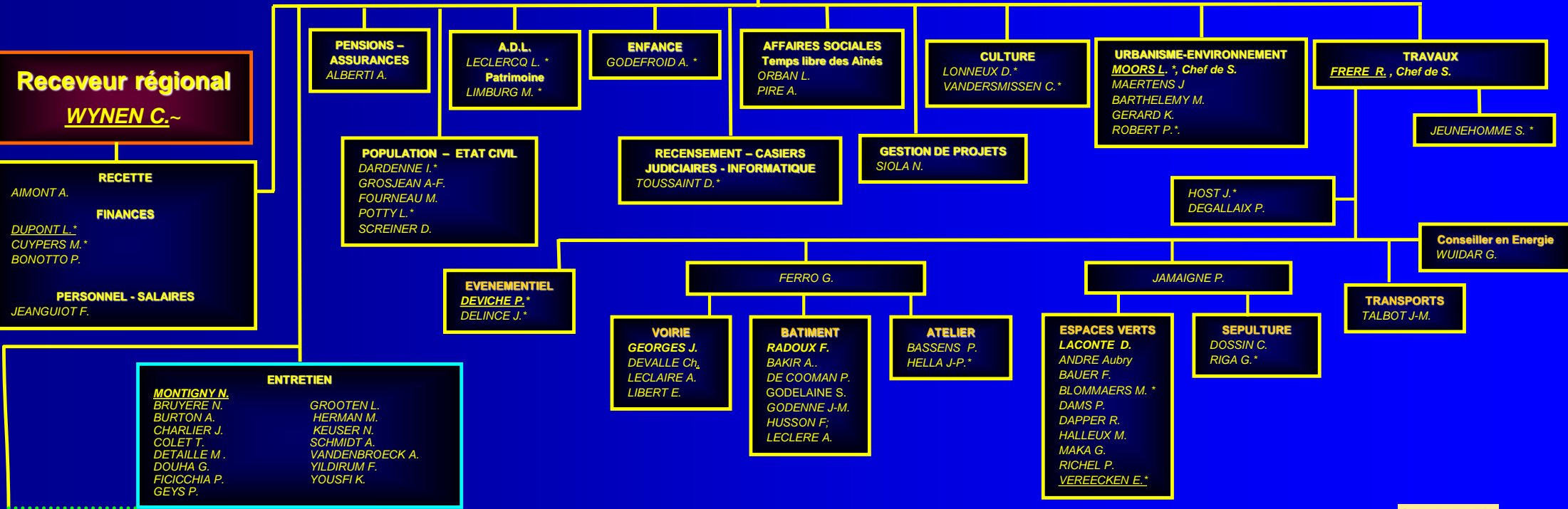
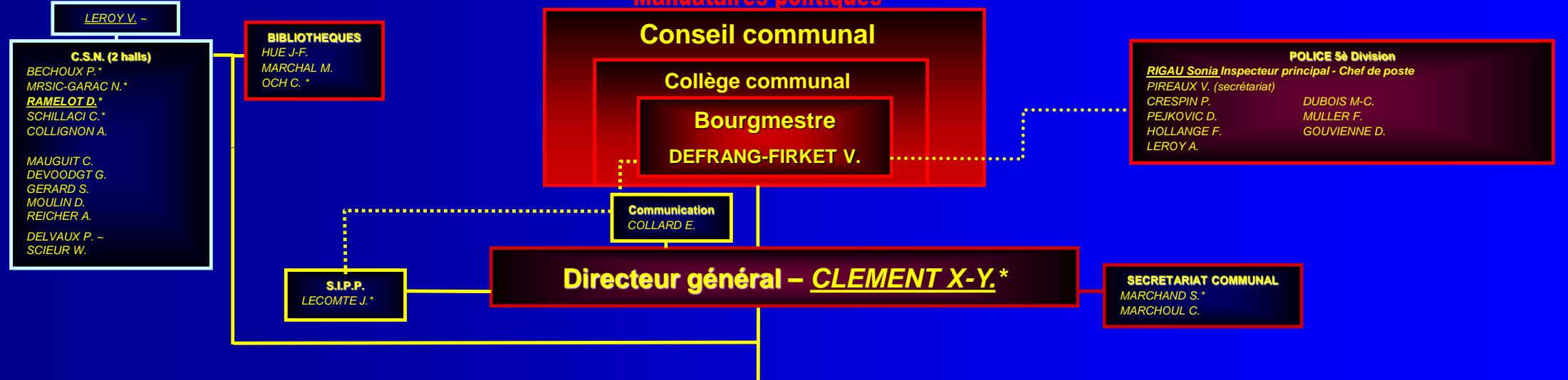


Mandataires politiques



TIMMERMANS M. – Gillet S. – GIRIN C. – LOHAY F. – DELMOTTE N. – STREEL G. – BREULHEID N. HASSE S. – HOURMONT V. – GIELIS P. – FONTAINE L. – LAURENT Y. – LIMBOUL F. – BONHIVERS J. – MAHY N. – XHENSEVAL S. – CALLUY L. – DECHARNEUX R. SCHMIT N. – RINGLET C. – NOËNS A. – BRERETON C. – DONY N. – GABBIADINI S. – CURVERS E. – PECHARD C. – JANSSENS C. – ETIENNE V. HOFFMANN C. – GOEDEL L. – DI STEFANO N. – WELCH J. – GOFFETTE S. – CREETEN S. – HUYNEN S. – ORBAN C. – PICCOLI F. – THIBAUT B. – BARBIER V. – ACHENNE S. – CLAJOT V. – BOVIE F. – DI PIAZZA S. – DELAUNAY L. – POULET L-M. – HOUSSIER J. – GIELIS M.



(*): personnel statutaire
(-): trait. extra communal

Conseil communal (21+1)

ECOLO
(3)

Newpré
(4)

H. THOMS D. LAMBERT P. LATIN Fr. CRUNEMBERG M. LAMMERETZ M-P. DAVID S. KOZLOWSKI



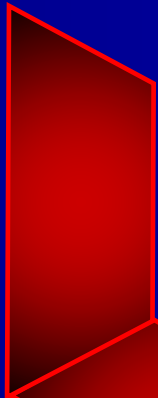
A. DELFOSSE

M. COUNE

C. JADOT

D. CUYPERS

A.G. KRUPA



D. PICONE

A. BOUGARD
Président du
CPAS



B.HONS Ph. MOREAU, X-Y. CLEMENT, V. DEFRANG- M. BIHET, Ch-A. VERSCHUEREN, S. CAPRASSE,
1er Echevin Président du Directeur général FIRKET, 2è Echevin 3è Echevin 4è Echevine
Conseil communal Bourgmestre

F. DELAMINNE Ch. THIELEN

P.S.
(4)

Collège communal

M.R.
(10)